



### **HARP 250/400/500**

Highly Abrasive Resistant Plates with Brinell hardness of 250, 400 and 500 for construction, cement, mining, civil engineering and forming equipment.



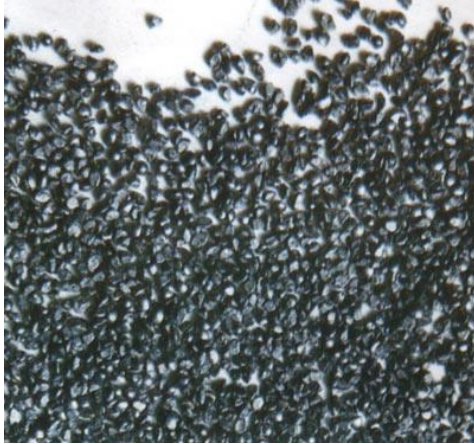
### **STEINSTAHL 140/ 337/ 045**

Special alloy steel solid and hollow bars, AISI 4140, 4340 and 1045. For general engineering purposes such as shafts, gears, pins, connecting rods, bolts and other fastener or connecting components.



### **STEINSTAHL 140/ 337/ 045**

Special alloy steel solid and hollow bars, AISI 4140, 4340 and 1045. For general engineering purposes such as shafts, gears, pins, connecting rods, bolts and other fastener or connecting components.



### **W Abrasive Steel Shots/Grits**

For sandblasting (by compressed air or centrifugal wheel), for shot peening and for surface treatment. Round steel shots for removing applications, descaling, simple snagging, shot peening. Has mass effect with maximum rebound and the obtained roughness is less and soft. Angular grits for trimming and descaling. It is angular when new and grain becomes round during usage, hence the cut effect is connected to the mass effect.



### **STAINLESS 310S / 304**

Stainless steel for moderately high temperature suitable for furnace parts, burner parts, heat exchange, etc. With good conductivity, toughness and weldability. Exhibit good resistance to corrosion to oxidizing and carburizing atmosphere.



### **OTHER FABRICATED PRODUCTS**

Pins, Hammermill Beaters, Perforated Sheets, Cutting Edges, Blades, Plates and other parts of equipment used in steel, cement, construction and chemical industries.